

La Lepra en Venezuela

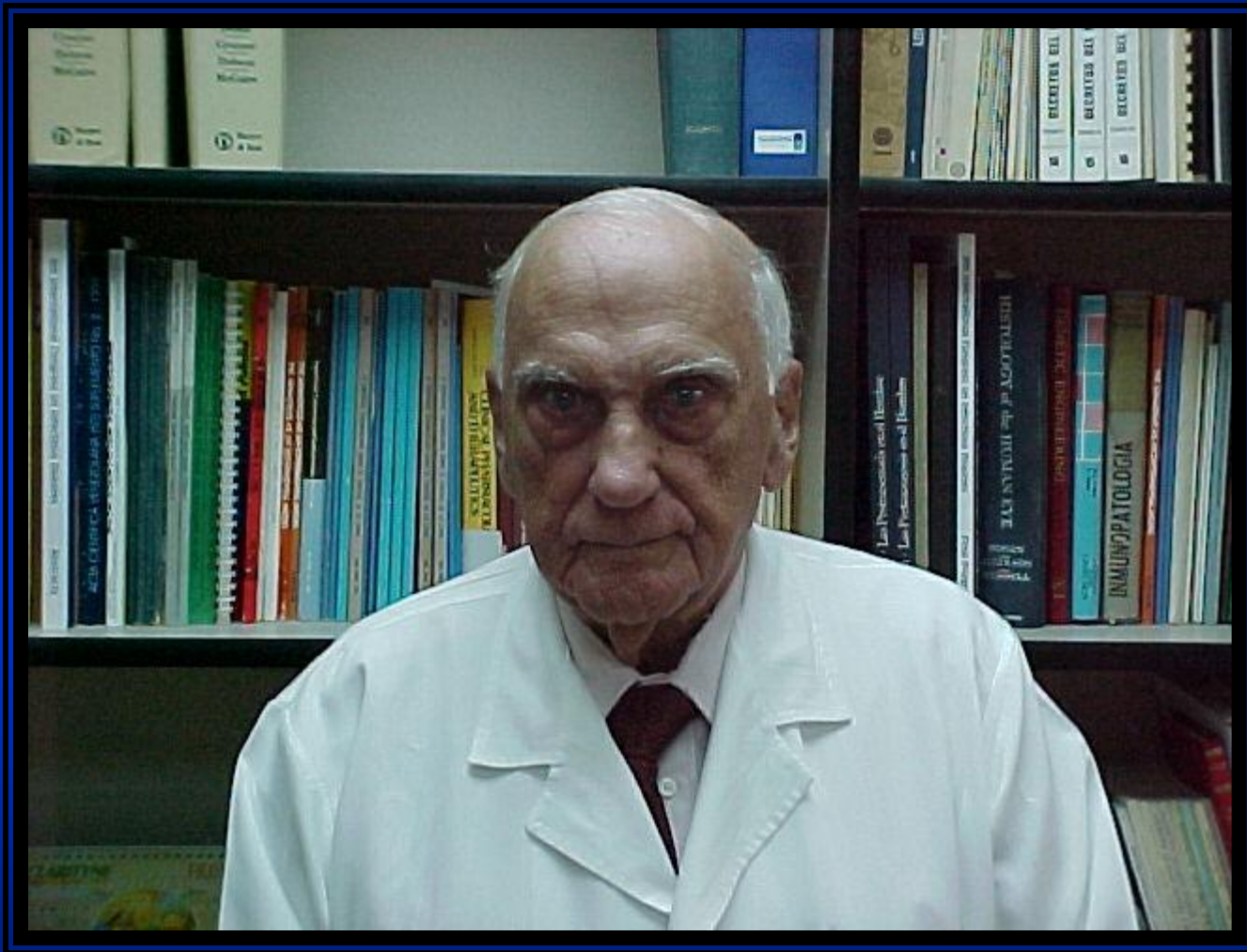
Dr. Antonio J. Rondón Lugo

Dra. Nacarid Aranzazu

Instituto de Biomedicina

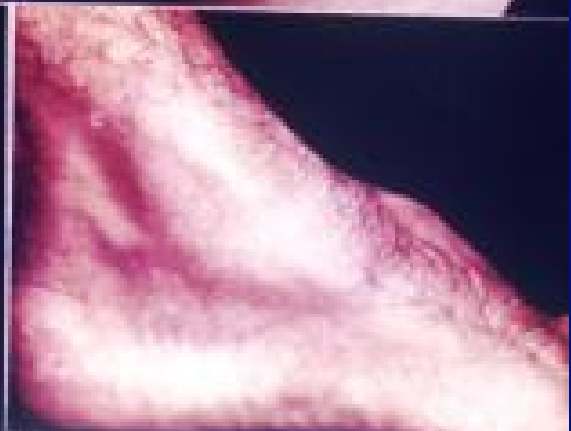
Caracas - Venezuela

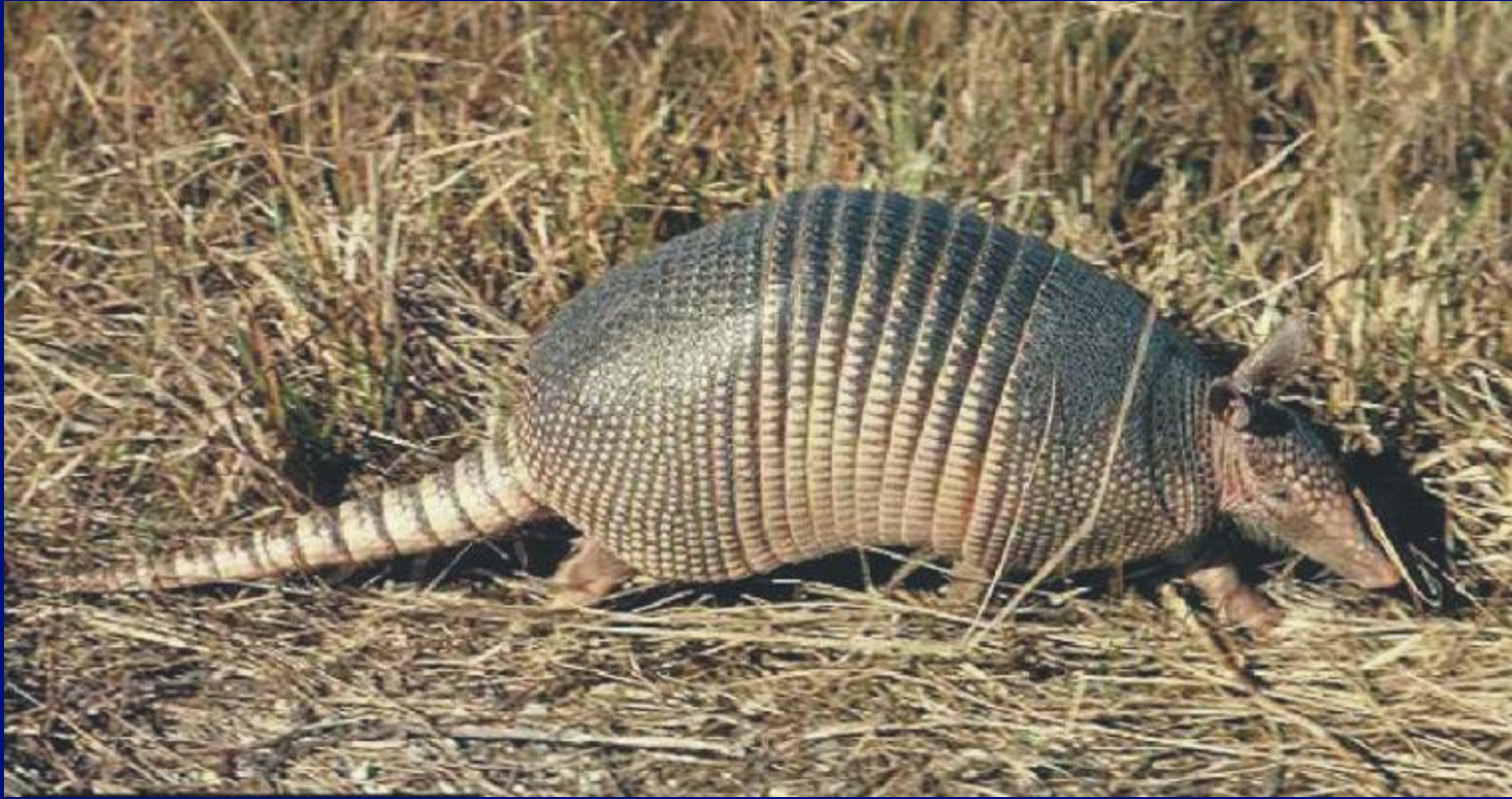


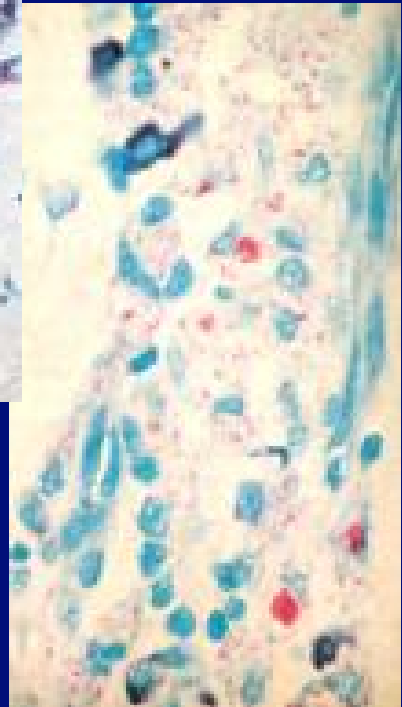
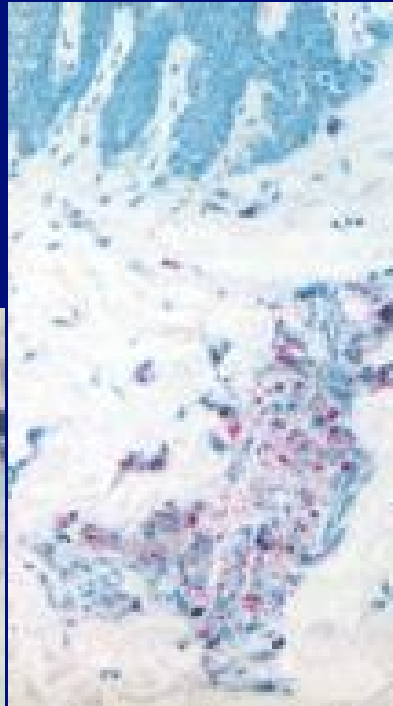
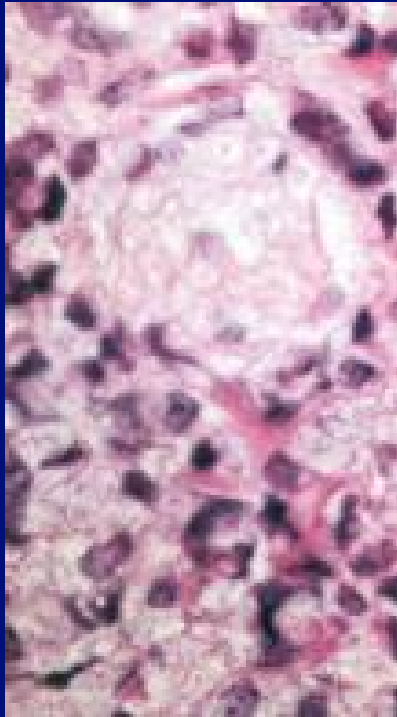












THE EXPERIMENTAL DISEASE THAT FOLLOWS THE INJECTION
OF HUMAN LEPROSY BACILLI INTO FOOT-PADS OF MICE

By CHARLES C. SHEPARD, M.D.

(From the Communicable Disease Center, Public Health Service, United States
Department of Health, Education, and Welfare, Montgomery, Alabama)

PLATES 38 AND 39

(Received for publication, April 25, 1960)

In the lepromatous form of human leprosy the nasal passages are commonly involved, and large numbers of acid-fast bacilli can be recovered in the nasal washings by methods that have been described (1). That the acid-fast bacilli obtained in this fashion are in fact *Mycobacterium leprae* is evidenced by a number of considerations (1), which include the close correlation of the number of acid-fast bacilli recovered with the typical clinical manifestations of the disease, the characteristic microscopic arrangement of the bacilli in globi and packets, and their inability to grow on bacteriological media. When these organisms were inoculated into the foot-pads of mice, small infiltrates containing acid-fast bacilli developed.

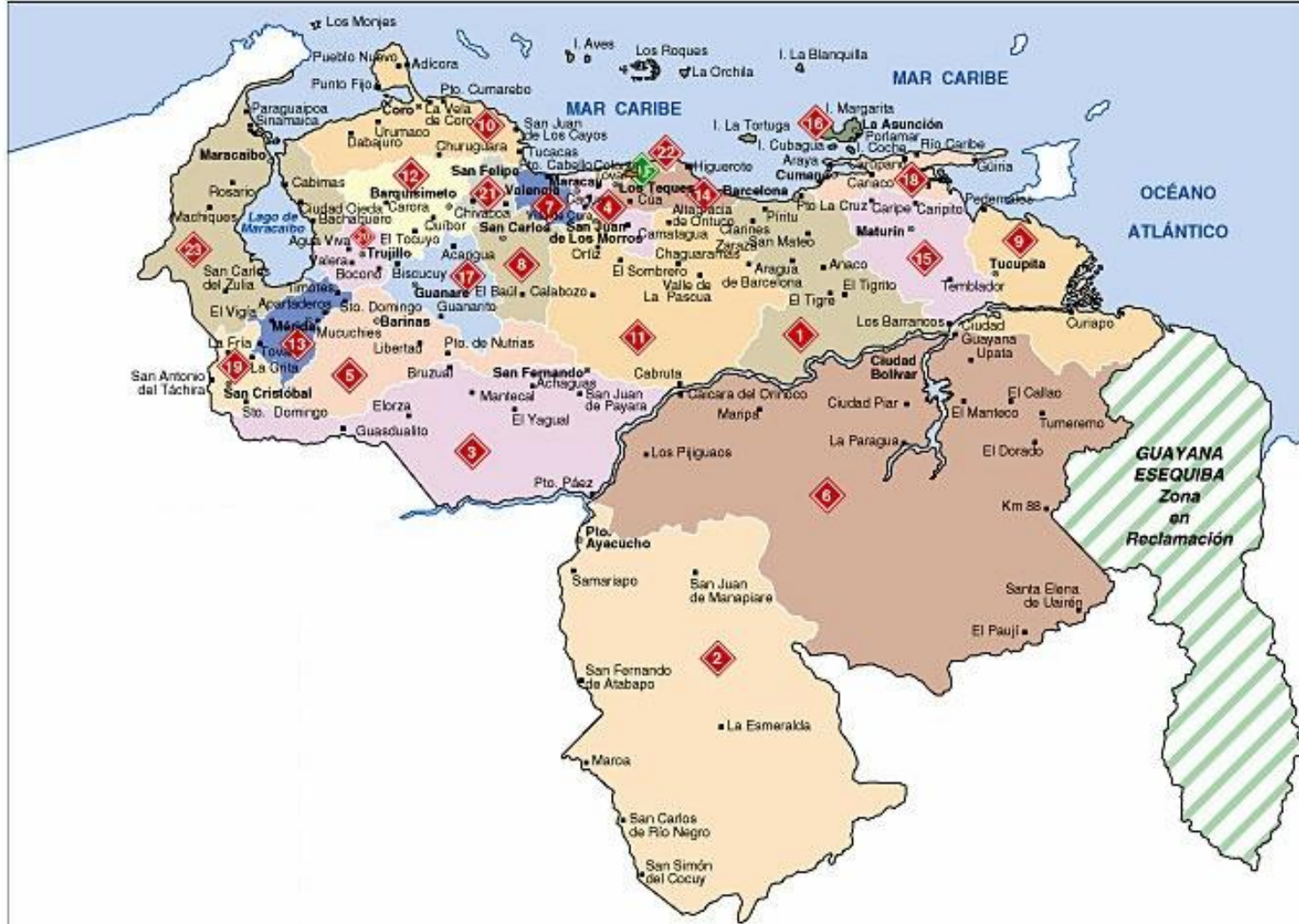
The present communication describes our continued experience with the experimental disease in mice. Microscopic lesions have been regularly produced when the nasal washings contained acid-fast bacilli, and the incubation period has depended upon the numbers of organisms inoculated. The maximum number of mycobacteria produced in the foot-pad was usually limited to about 10^6 , and multiplication has occurred when the inoculum has contained an appropriately small number of bacilli. The oldest strain has been through four passages.





Era Post-sulfónica

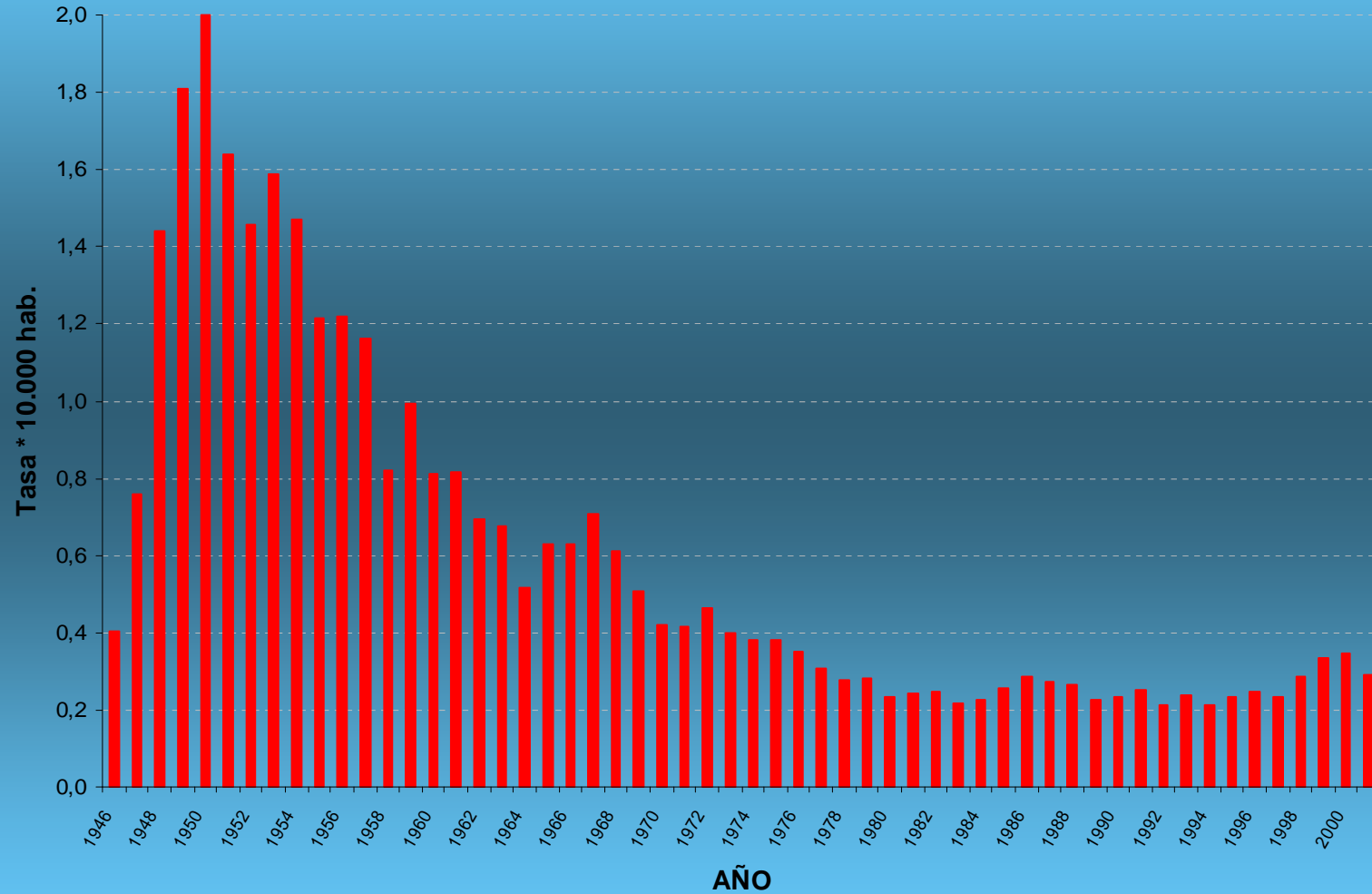
- **Multibacilares Adultos:** Duración 2 años
 - DDS 100 mgs/día
 - Clofazimina 50 mg/día y 300 mg/mensual y Rifampicina 600 mg/mes
- **Paucibacilares adultos:** Duración 6 meses
 - DDS 100 mg/día
 - Rifampicina 600 mg/mensual



Instituto de Biomedicina

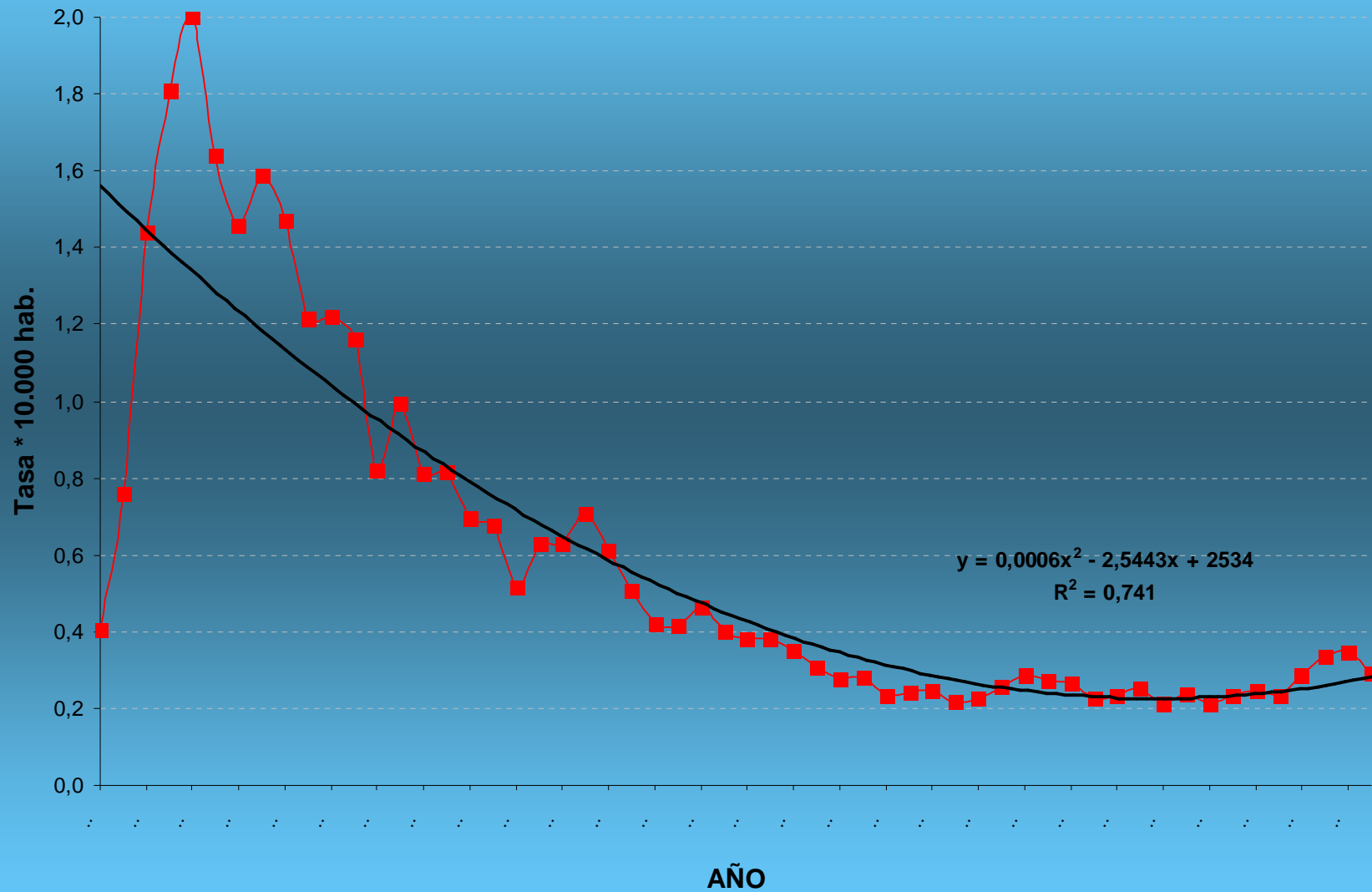
Servicios de Dermatología Sanitaria

TASA DE DETECCIÓN DE LEPROSA VENEZUELA 1946-2001



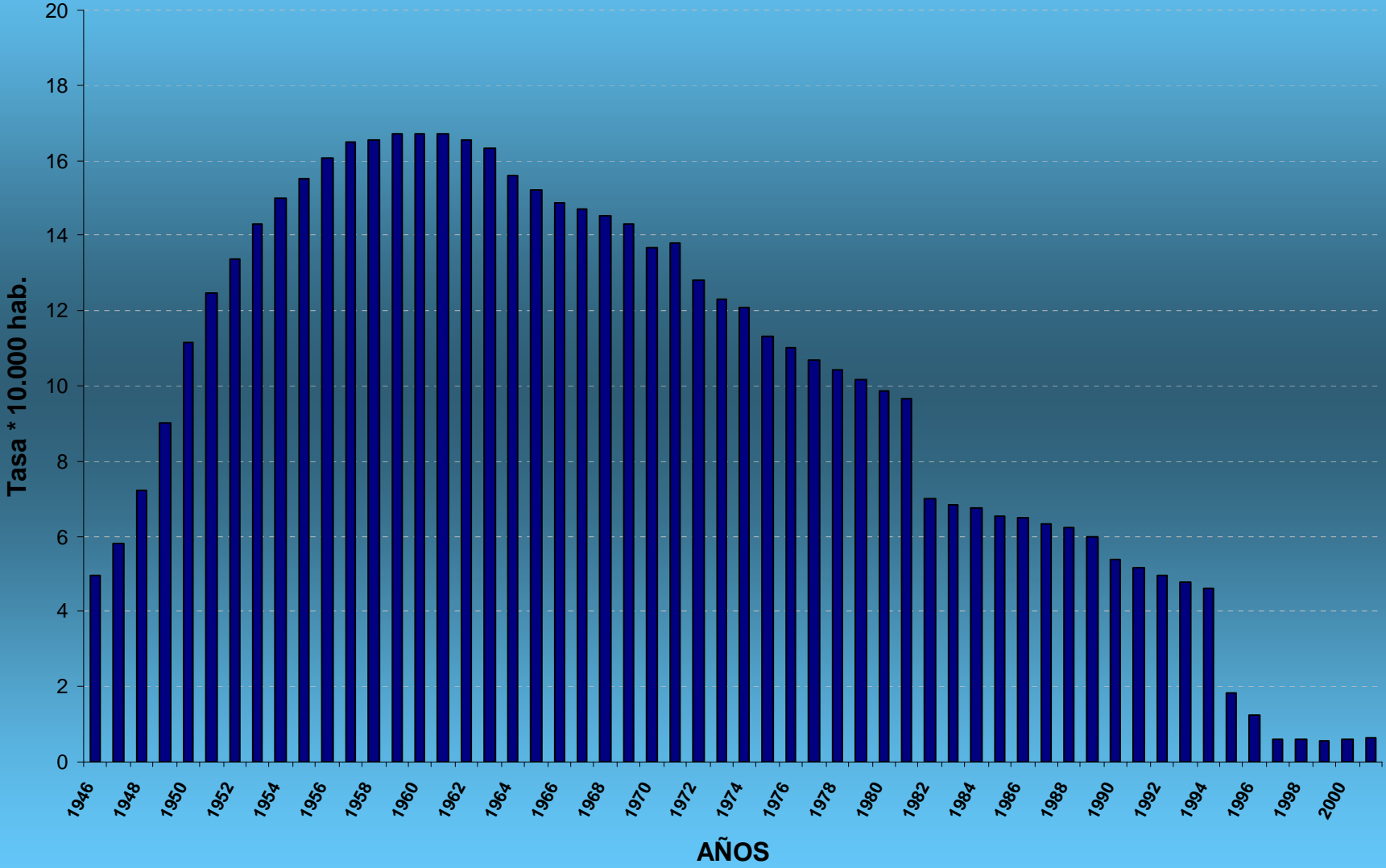
Fuente: MSDS, S.A. Instituto de Biomedicina, Dpto. Computación, JED

TASA DE DETECCION DE LEPROA VENEZUELA 1946-2001



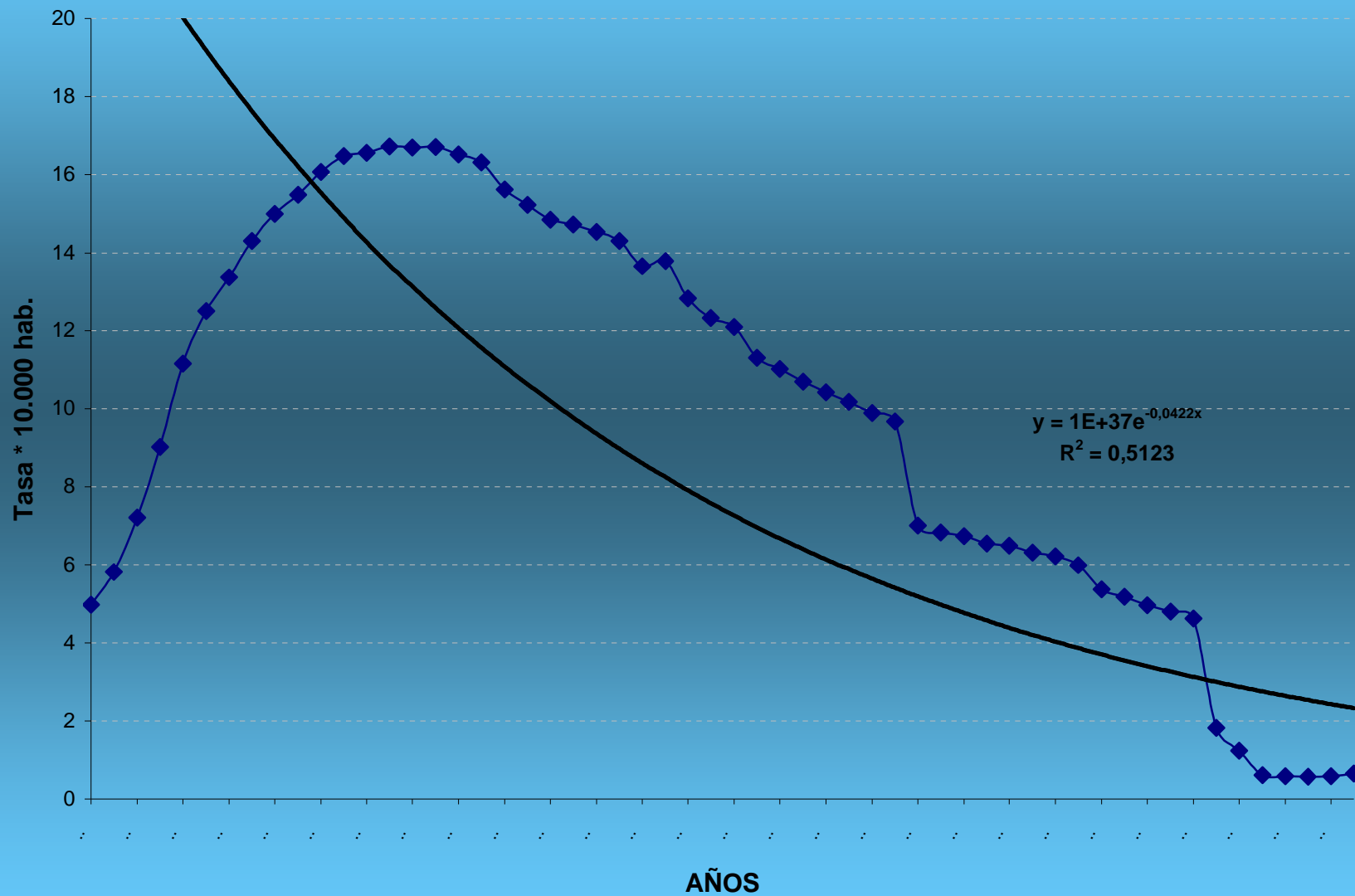
Fuente: MSDS, S.A. Instituto de Biomedicina, Dpto. Computación, JED

TASA DE PREVALENCIA DE LEPROA VENEZUELA 1946-2001



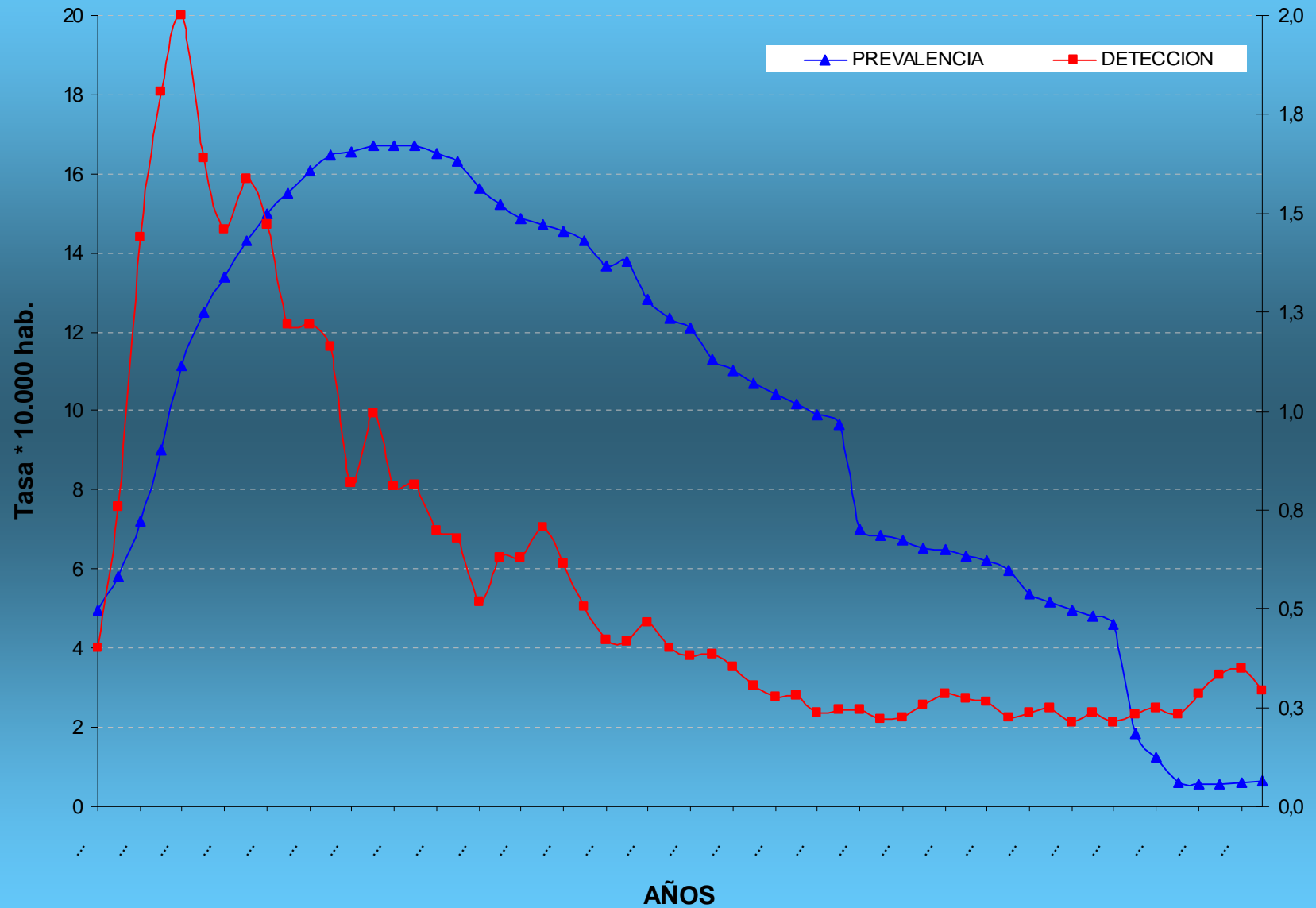
Fuente: M SDS, S.A. Instituto de Biomedicina, Dpto. Computación, JED

TASA DE PREVALENCIA DE LEPROA VENEZUELA 1946-2001



Fuente: MSDS, S.A. Instituto de Biomedicina, Dpto. Computación, JED

TASAS DE PREVALENCIA Y DE DETECCION DE LEPRA VENEZUELA 1946-2001



Fuente: M SDS, S.A. Instituto de Biomedicina, Dpto. Computación, JED

Nuevas Estrategias

44^a Asamblea de la OMS 1991

- **Resolución 44** conmina a los Estados Miembros para promover las medidas de control incluyendo MDT para la eliminación de la lepra como problema de salud pública para el año 2000 (menos de 1 caso por 10000 habitantes)

Gracias



**Muito
Obrigado**